

12-12
11-12

12-13
11-13

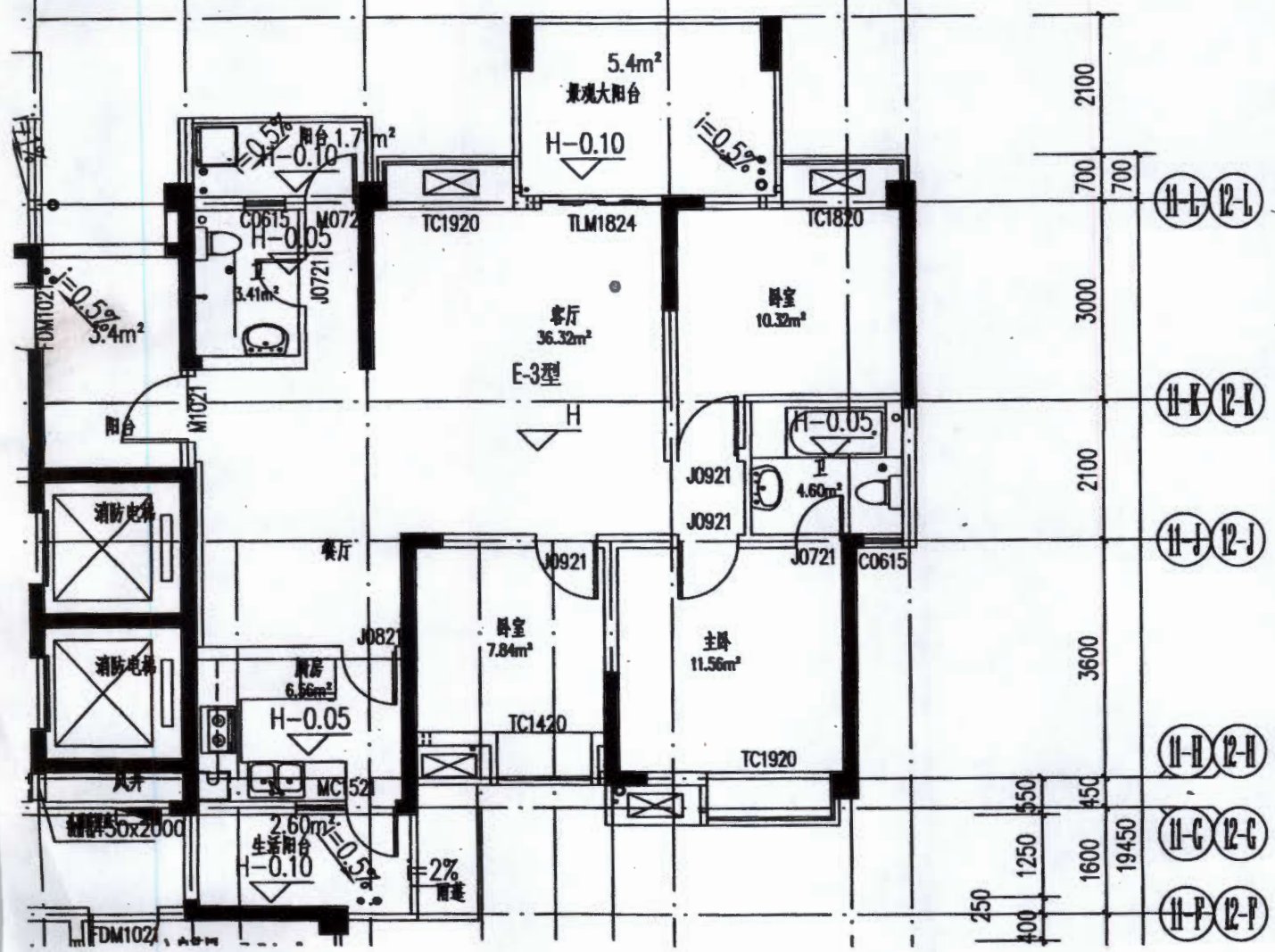
12-15
11-15

12-19
11-19

12-21
11-21

2200 2650 4500 2700 900

50 2200 850 600 700 750 500 1900 400 1800 100 1700 1600 300



11-L 12-L

11-K 12-K

11-J 12-J

11-H 12-H

11-G 12-G

11-P 12-P

2100

700

700

3000

2100

3600

250

400

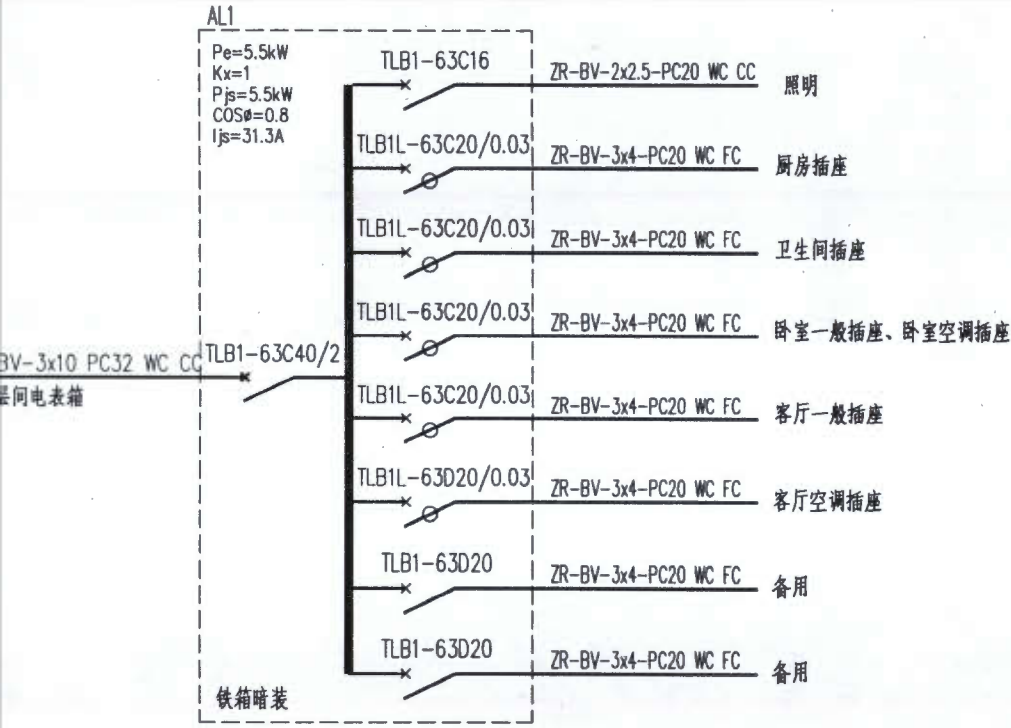
1250

550

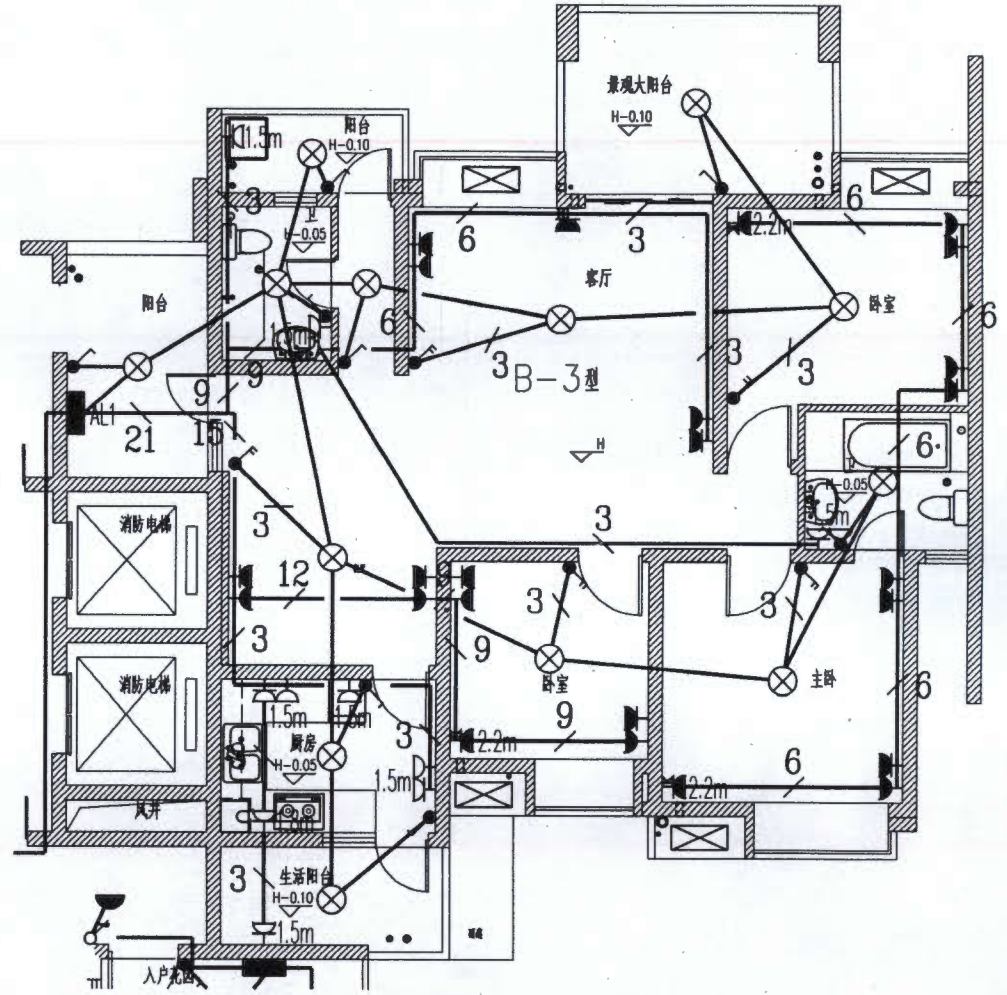
1600

450

19450



11-12号楼户内配电箱系统图



11-12号楼B-3户型电气平面图